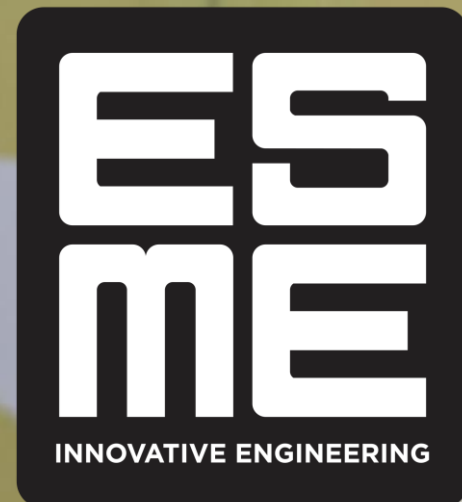


120 YEARS
ESME
EST. 1905



- ENGINEERING SCHOOL IN PARIS, LYON, LILLE & BORDEAUX



THE SCHOOL OF ENERGY, MECHANICS & DIGITAL TECHNOLOGY WHERE FUTURE ENGINEERS LEARN TO SHAPE THE WORLD

IN NUMBERS

- **Founded in Paris in 1905**
- **3.000 Students**
- **300 Faculty + Staff**
- **30 Nationalities**
- **18.000 Alumni**



120 YEARS
ESME
EST. 1905

Paris Campus

JARDIN DU L

Google Earth
Airbus, Data SIO, NOAA



x



SUMMER SCHOOL 2026

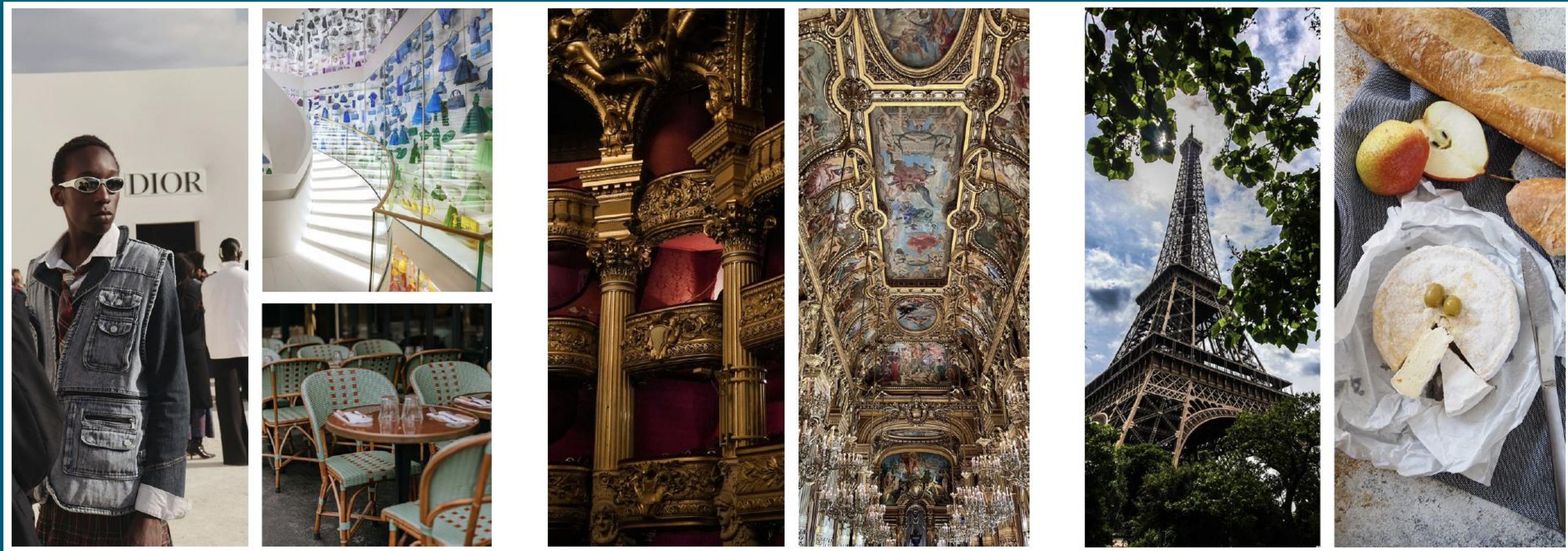
LANGUAGE, CULTURE & TECH

July 13 – 24, 2026

Alliance Française of Paris

Established in **1883** to promote France's language & culture
French as a foreign language schools in the world

Headquarters to **the largest network of**
830 locations in **133** countries



The Study Program: Language & Tech

Alliance Française:
Learn French as
a foreign language
with
some of the
Best teachers in
France

18 hours



5 ECTS



ESME:

Learn. Innovate.
Create.

Use our **makers lab's**
cutting-edge
technology to learn
new skills from our
experts. **Prototype**
your own robot to
take home

18 hours

Tech at ESME

Tech will be structured around a series of courses and hands-on workshops focused on design, innovation, and making.

Key topics include:

Prototyping and design thinking

Digital manufacturing techniques

Interactive and algorithmic design (using Processing)

Electronics and physical computing (Arduino)

CNC machining

CAD and 3D modeling






3D printing

Use our makers lab's cutting-edge technology to learn new skills from our experts.



Discover Paris

MONDAY / LUNDI 13	TUESDAY / MARDI 14	WEDNESDAY / MERCREDI 15	THURSDAY / JEUDI 16	FRIDAY / VENDREDI 17	SATURDAY / SAMEDI 18
9am - 12pm French lessons / Tech lessons					
					
3pm - 8pm Paris seen from the Seine: riverboat cruise. Pétanque and Picnic	3pm - 5pm Guided tour: from Notre-Dame to Île de la Cité	3pm - 8pm Guided tour of Montmartre and Dinner in a Parisian bouillon	3 p.m. - 6 p.m. Guided tour: Champs-Élysées, the Golden Triangle, and the Arc de Triomphe	3pm - 5pm Discovering French cheeses: tasting workshop	11 a.m. - 6 p.m. A day in Versailles

SUNDAY / DIMANCHE 19	MONDAY / LUNDI 20	TUESDAY / MARDI 21	WEDNESDAY / MERCREDI 22	THURSDAY / JEUDI 23
9am - 12pm French lessons / Tech lessons				
				
1pm - 7pm A day in Giverny: In the footsteps of Claude Monet	2:30pm - 4:30pm Tasting workshop: Discovering Parisian pastries	4pm - 9pm The stars of the Musée d'Orsay and Dinner at the museum restaurant	3pm - 5pm Guided tour of "Haunted Paris"	3pm - 5pm Treasure hunt: in the footsteps of Danton



X



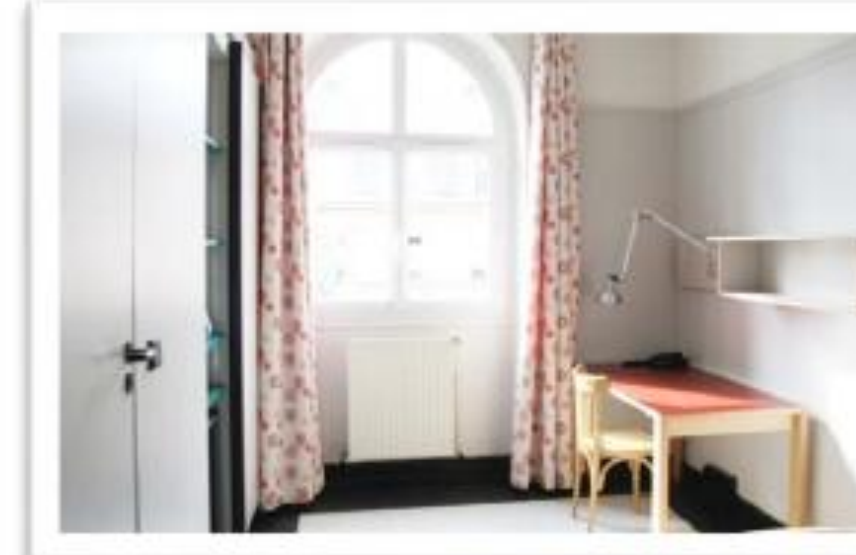
July 13 – 24, 2026

Accommodation



Cité Internationale Universitaire de Paris:

<https://www.ciup.fr/en/>




x



July 13 – 24, 2026

Living Expenses

- Accommodation (Covered by ESME)
 - Transportation \simeq 65€
 - Estimated food budget: €200 (lunch covered by ESME).
 - Breakfast not provided (€30–€50)
 - Dinner, is not provided, may cost approximately €140–€280
- 
- If meals are self-prepared in the kitchen facilities (e.g., at Cité Internationale Universitaire), dinner & breakfast costs may be approximately €30–€60 for the two-week program.
- Internet \simeq 20€/month
 - Parties – Going Out \simeq 100€
 - Cultural visits \simeq (Covered by ESME)

Tuition Fees

For members of ESME Partner Network:

With Housing:
2190€

Without Housing:
1790€

Lunch & activities are included





Lucas Brot
Outbound Mobility
Coordinator

Sarah Campistron
Head of International
Development

Melissa Hamitouche
Inbound Mobility
Coordinator

Paul Badeau
Director of
International
Development

Pauline Boutillier
Outbound Mobility
Coordinator
English Section Student
Advisor

Flavia Ribeiro
Head of the
Department of
Languages

Jonathan Chivers
Deputy Head of the
Department of
Languages

Contact:

Email international@esme.fr

THE TEAM

OUR STUDENTS SAY (OR DO) IT BEST: ⚡

THANK YOU!

www.esme.fr/en

Follow us on:

[YouTube](#)

[Instagram](#)